

# Public Health & Care Research Leadership Program

**UMIO** *expand your perspective*

PROFESSIONAL - DEVELOPMENT

# For whom?

This program has been developed for Postdocs and Assistant Professors in public health and care research, who have the ambition to improve their knowledge and skills to become leading researchers.

## If you:

- have several years of work experience with leading a group of researchers or supervising PhD students;
- have a research track record as evidenced by publications, in academia and beyond;
- show significant promise as a researcher or practitioner;
- have a demonstrated expertise in public health / care issues and a track record through research, policy analysis, health services or clinical leadership;
- **current and future research activities;**
- can provide us with a motivation letter from yourself and of your direct supervisor, and two motivation letters from colleagues....

...then this program will support you in your development to become a leading researcher in public health & care!

# Public Health and Care Research Leadership Program

**During this 2 year program, you will engage in the following learning activities:**

- Intake interview
- Four 2,5 day modules (Locations Maastricht, Rotterdam, Cambridge, Amsterdam)
- Mutual learning groups
- Personal coaching
- Buddy breakfasts
- Inspirational content between modules (blogs/microlearning video's/articles)
- Building your own Leadership Development Portfolio

# Learning goals of the program

To become a leading researcher in the public health / care research domain requires more than being an excellent scientist. In addition to acquiring competences concerning content, you also need knowledge, skills and tools to understand and manage the context. This implies -all in the public health and care research context-:

- Being able to lead yourself and others

Shape your own leader role and understand leader-follower dynamics, cultivate a proactive attitude towards your own career, your organization and society, develop and share your research vision and social impact, build your presence for different audiences and strengthen your visibility as a leader, master storytelling and customized pitching with impact.

- Developing an entrepreneurial mindset and creativity

Grow your entrepreneurial spirit, see and create opportunities for research (grants), understand the funding landscape and societal impact, further develop your passion for public health and care research.

- Building effective teams and skills to navigate the network

Develop skills to manage complexity, understand and effectively lead team dynamics. Know how to connect science to practice, strengthen your international network and be visible in it.

- Knowing how to lead change

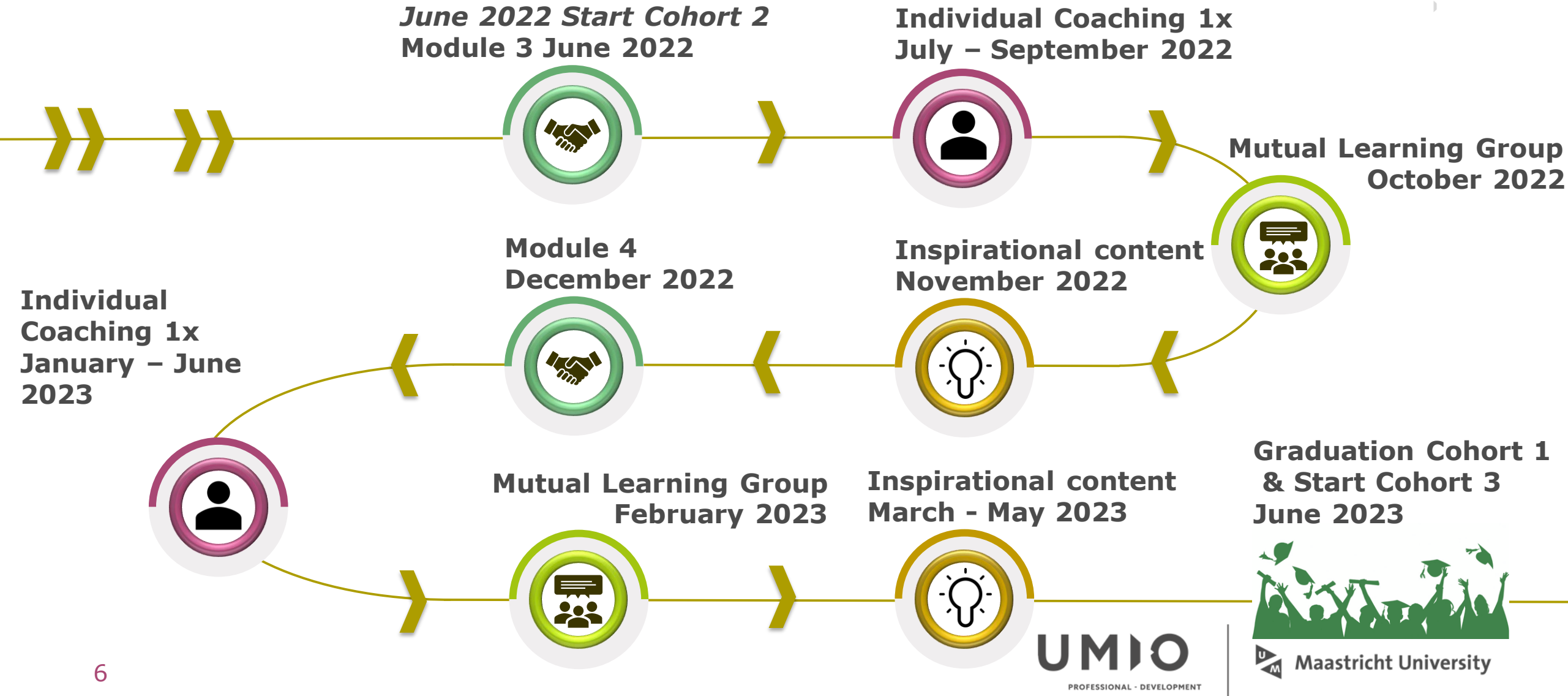
Understand different change processes and your role within them. Develop higher level strategic thinking to navigate change in an agile manner.

# Program



# Public Health and Care Research Leadership Program

UMIO  
M OUMIOU IO  
UMIOUMIO MI  
UMI  
IOUMI  
UMIO M  
UMI U  
O



# Assessment Interview

- Based upon the selection criteria, an admissions committee selects the preliminary participant group and invites participants for an online admissions interview by program management. Based upon the interview participants can be granted a seat in the program.
- During the assessment interview, participant's learning goals, ambition, motivation, commitment is assessed.
- A letter of acceptance is issued by program management.



# Modules

## Module 1 Leading yourself and others

- Day 1 Welcome, acquaintance, meeting coaches, dinner speaker
- Day 2 Buddy breakfast  
Shape your own leadership role and understand leader-follower dynamics. Cultivate a pro-active and assertive attitude regarding your own career
- Day 3 Develop and share your research vision, master storytelling and customized pitching with impact

## Module 2 Entrepreneurial mindset

- Day 1 Welcome, dinner speaker
- Day 2 Buddy breakfast  
Develop your entrepreneurial spirit and passion for public health research
- Day 3 See and create opportunities in research with societal impact  
Research integrity  
Publication strategies  
Understand the funding landscape and develop your ability to address priorities of funding agencies

*Participants will prepare for the modules through readings and short assignments*





# Modules

**Module 3   Building teams, navigating the network**

- Day 1   Welcome, dinner speaker on triple helix partnerships in research
- Day 2   Buddy breakfast  
Develop skills to manage complexity: perspective taking, negotiation, influencing and persuasion skills
- Day 3   Understanding team dynamics and leading effective teams

**Module 4   Leading change**

- Day 1   Welcome, dinner speaker topic tbd group
- Day 2   Buddy breakfast  
The meaning of change, understanding different change processes and approaches
- Day 3   Leading change and developing higher level strategic thinking to navigate change in an agile manner

*Participants will prepare for the modules through readings and short assignments*

# Planning & location

■ 2021, June	Maastricht	Module 1
■ 2021, December	Rotterdam	Module 2
■ 2022, June	Cambridge	Module 3
■ 2022, December	Amsterdam	Module 4

# Individual Coaching sessions

- You will engage in 1 online coaching sessions in between the modules, in total 4 sessions of 1 hour.
- Potential topics: personal leadership development questions/challenges.

# Mutual Learning groups

- You will engage in 1 online mutual learning group sessions in between the modules, in total 4 sessions.
- Potential topics: questions/challenges/successes on building the a research vision, working in networks, successful or disappointing grant applications.



## Buddy breakfast

- During the program you will engage in Buddy breakfast sessions in order to reflect on the past module, share learnings and discuss ideas & challenges with a co-participant.

## Inspirational content

- In between the modules, you will receive inspirational content from the program team in the online learning environment. Inspirational content might be a microlearning video, a blog, an article etc.

# Leadership Development portfolio



- During the program you will describe your personal development in a reflection diary that includes the various components of the learning journey. The portfolio is meant as a supporting tool for integrating your own development process. It should include reflections on the sessions (modules/mutual learning groups/personal coaching sessions/buddy breakfasts), but also inspiring quotes, stories, pieces from literature.
- At the end of the program you hand in your personal leadership development report, reflecting on personal learnings and next steps to be taken.

# Innovative learning methods



- In all of our learning journeys, we use Maastricht University's Problem Based Learning approach. PBL is an active way of learning that gives you better retention of knowledge, enhances your motivation and encourages you to develop skills that are essential for the labour market in the 21st century. We create personal, small-scale, hands-on and interactive settings to make sure your way of looking at things will never be the same again.
- We believe that people learn in many different ways. That is why our offerings are not mainstream training. We look for uncommon, innovative, opportunities to learn and develop people:
  - Applying elements of Problem Based Learning, specifically aimed at professional development
  - Submerging in experiential learning methods
  - Using an extensive toolbox of training methods and project formats
  - Using a multi-disciplinary approach and broadening perspectives
  - Stimulating the occurrence of serendipity by exposing to and experiencing unexpected interactions (e.g. cultural activities)
  - Integrating proven academic models

# Registration fee



Participant fees for the 2 year Public Health and Care Research leadership program amounts to € 8500 for the whole 2-year program.

## *Fees include:*

- Program registration, intake and participant communication.
- All materials and online learning environment.
- Training instruction (4 modules of 2,5 days, 4 online coaching hours per participant, 4 online mutual groups of 1,5 hours)
- Refreshments (2,5 days), lunches (2), dinners (2) and buddy breakfast (1) per module.

Overnight stays and travel costs of participants are not included in this fee.



TO BE AHEAD,  
THROUGH  
INNOVATIVE  
THINKING

umio.nl

**UMIO** *expand your perspective*

PROFESSIONAL - DEVELOPMENT